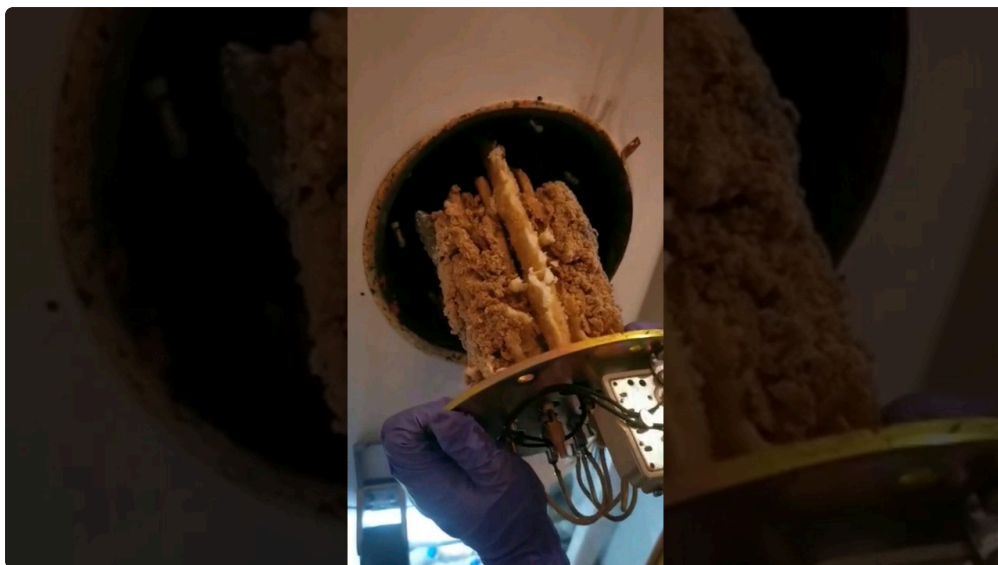


A boiler breakdown rarely declares itself in a dramatic method. Most of the time it starts off with whatever thing small and a little bit anxious, the style of issue you word although making tea or looking ahead to a shower that in no way quite arrives. And you then birth hearing varied noises, seeing alternative blunders codes, and getting that tight feeling that comes from thinking whether it's "just a minor fault" or some thing that would depart you without heating for days.



The intricate phase is that the identical symptom can have multiple purpose. A boiler that "gained't fireplace" probably a fuel factor, an ignition concern, a keep watch over obstacle, or perhaps whatever as mundane as low manner tension. A boiler that short cycles, fires then stops, possibly a circulate hassle, a sensor fault, or an overzealous thermostat. The desirable information is that many breakdown indicators comply with styles, and one could slim them down easily as soon as you understand what to look for.

Below is a realistic support to the most familiar boiler breakdown signs and symptoms, what they sometimes imply, and what you must do subsequent. I'm going to attention on proper-world observations I've considered throughout boiler provider visits and boiler restoration jobs, which include gasoline-same approaches and LPG setups, the place applicable.

First, be aware of what you might be managing: heat and warm water symptoms

When a boiler behaves badly, it enables to split the difficulty into two questions:

1) Is it failing to heat radiators (space heating)? 2) Is it failing to warmth scorching water for faucets and showers?

That separation in the main tells you where to appearance. A boiler can heat radiators flawlessly and refuse to supply warm water, on the grounds that the fault lies inside the diverter valve, the plate warm exchanger, the cylinder sensor, or the hot water drift direction. Or it may make hot water but not warmth the space, which elements more towards the heating controls, move, or a radiator move difficulty.

If your boiler is on a components with a separate cylinder and controls, or a combi boiler with a plate heat exchanger, the symptoms will still map to particular accessories. The extra accurately you could describe what works and what doesn't, the speedier an effective engineer can get to the foundation intent.

Symptom: no heating and no scorching water

If the boiler is fully lifeless, no longer heating or making sizzling water, you're usually having a look at one in every of a handful of classes: power, gasoline source, protection reduce-offs, or a control failure.

Common precise-life examples encompass:

- The boiler exhibits no indications of existence, but different loved ones electricians paintings. That is additionally as practical as a tripped fused spur or a boiler isolator switch became off in the time of preservation. Less repeatedly, it's a failed PCB.
- The boiler makes an attempt ignition but doesn't stay lit. This can level towards ignition electrode matters, gas valve disorders, contaminated condensate (for condensing items), or a gasoline safeguard similar interruption.
- The boiler lighting for a second and shuts down mostly. That facets towards either a detection quandary (flame sensing) or a protection or strain element.

You can also see safeguard-same shutdowns wherein the technique trips due to overheat, blocked flue, or combustion items now not being expelled properly. If the flue is affected, you should deal with it seriously. Even where it "seems to be excellent" visually, flue gas trouble can trigger lockouts and safeguard behaviour.

Because this symptom spans distinctive factors, the most advantageous first step is checking what the boiler is telling you. Error codes, flashing lighting fixtures, and any messages at the exhibit are usually not decorative. They're the boiler's attempt at narrowing the fault all the way down to a circuit or safeguard circumstance.

Symptom: low stress or "pressure keeps shedding"

If your rigidity gauge sits low, or it drops through the years, your boiler would still warmth normally, then fail whilst the components can't protect flow.

Low boiler power is one of the vital most hassle-free call-outs as it's not perpetually a dramatic fault. A sluggish leak at a joint, a erroneous radiator valve, a drip at an appliance, or corrosion in a pipe run can all bleed method water power over days or weeks. After a best-up, it is going to behave for some time, then fail to come back.

For clients, the everyday indications are:

- Boiler begins as a rule, then stops and presentations a low strain caution or fault.
- Radiators may possibly cool unevenly. One upstairs zone may well really feel quality even as yet one more stays lukewarm.
- You could pay attention air-linked noises like gurgling, primarily after topping up.

A associated predicament is a failing growth vessel. In a sealed heating device, the expansion vessel "breathes" as the water heats and cools. If it will possibly't take the stress, the force can climb too prime or drop in odd styles. Either means, it's a mechanics-and-safe practices trouble, no longer a specific thing you may want to store resetting oftentimes without investigating.

Symptom: radiator heating troubles (bloodless spots, susceptible warmth, or choppy warmth)

When radiators fail to heat excellent, it's tempting to blame the thermostat and go on. But in apply, a radiator predicament almost always comes down to one in all three themes:

- flow and move problems
- trapped air
- restrictions or scale construct-up

If you've currently bled radiators and the formula responds for an afternoon or two, the boiler itself perhaps best and the air factor might be chronic somewhere else. If you bleed repeatedly, that issues more strongly to a leak letting air in. That can comprise small leaks hidden behind boxing or less than floors.

If radiators are chilly on the bottoms or have one area significantly colder than yet another, you'll be handling sludge or scale inside the method. This is wherein a electricity flush once in a while enters the communication. A chronic flush seriously isn't a specific thing you do casually, but within the precise case it's going to repair circulation by using dislodging particles in the pipework and radiators. It's additionally now not chance-loose. Older strategies, marginal pipework, and specific fittings can also be harassed by means of aggressive cleansing. The precise determination relies on machine situation, age, and what the engineer unearths throughout evaluation.

Symptom: boiler brief cycling (fires, heats briefly, then stops)

Short cycling is while the boiler turns on, runs for a short duration, then turns off, many times repeating in speedy succession. You may perhaps see short bursts of warmth, then no warmth, and the boiler would possibly consider louder as it "kicks" on again.

This can show up when:

- the boiler is sensing temperatures incorrectly
- the approach can't move water quick enough (pump, valve role, blockage, or air)
- the heat call for is risky as a result of keep an eye on or wiring issues

A normal authentic-world situation: a person activates heating, the boiler fires, then the radiators do now not reply promptly, and the boiler reaches a threshold temperature and shuts off. That can seem like a "boiler fault", yet it's in some cases a technique flow problem. It will become a plumbing dilemma as much as a boiler restoration subject.

If you furthermore may have an Air conditioning formula or Aircon hooked up to the related plant side, that's well worth bringing up to the engineer. It doesn't promptly result in boiler quick cycling, but it will possibly complicate how demands and zones are managed, incredibly on multi-method homes. It also modifications what "known" appears like throughout the heating season.

Symptom: hot water runs bloodless, intermittent, or basically works on one setting

Hot water faults are some of the such a lot challenging breakdown signs due to the fact one can go from "sometimes great" to "nothing" in mins.

For combi boilers (or even a few method boilers feeding home hot water), intermittent hot water occasionally suggests a flow course or sensor quandary. If the boiler makes warm water at low float but struggles at bigger demand, that may element to move restriction or a warmth exchanger element.

If the boiler makes sizzling water but it's handiest tepid, you would possibly see:

- a temperature sensor fault
- a plate heat exchanger scaling issue
- diverting valve sticking or failing to modify properly
- regulations inside the family hot water plumbing

In older residences, it's commonplace to in finding ancient upkeep that have been "fabulous adequate" at the time yet don't continue to exist modern-day call for. A boiler upgrade or new boiler set up can normally expose weaknesses in present pipework, waft prices, or water excellent patterns. That's now not constantly a fault with the boiler. It's about the entire setup doing its activity collectively.

Symptom: boiler not igniting, ignition clicking, or flame failure

One of the maximum trouble-free misery calls is the boiler trying ignition constantly, at times with clicking sounds, then locking out. Flame failure can demonstrate up as:

- the boiler makes an attempt to spark however not at all proves flame
- the boiler proves flame briefly then shuts down
- it locks out and calls for guide reset

The commonplace suspects for ignition and flame proving include ignition electrode problems, infection on detection parts, inaccurate gas valve behaviour, or combustion air and flue difficulties. For fuel appliances, a real Gas Safety Check subjects here, considering the fact that combustion exceptional and flue extraction are safeguard related, not simply "performance" related.

For properties the use of LPG, the fuel furnish and regulator behaviour develop into even more most important. LPG procedures can behave in [Boiler Breakdown Essex](#) a different way, noticeably if the tank is low, regulators are mismatched, or pipe runs are tormented by outside prerequisites. An engineer will account for this throughout Gas defense certificates paintings and servicing.

Symptom: extraordinary noises (kettling, banging, whistling, gurgling)

Noises are most often the easiest clue to spot, however they're not necessarily the only to restore.

Kettling is a traditional condensing boiler grievance: a rumbling, boiling-in-a-pot sound, occasionally followed via diminished efficiency and occasionally a fault code tied to overheating or waft. Kettling is most often on the topic of scale construct-up inner warmth exchangers or deficient stream.

Banging or knocking may be water hammer results, fairly if valves slam or if air is trapped. Persistent banging too can sign go with the flow difficulties, stuck valves, or pump things.

Whistling or fan-similar noises can repeatedly be frequent for guaranteed stages, however if the pitch ameliorations all of the sudden or comes with lockouts, treat it as a diagnostic clue other than history noise.

Gurgling continuously facets to air in the method. That can show up after topping up, but if it continues coming again, you most likely have an air ingress path, sometimes a leak.

Symptom: boiler journeys breakers or presentations regular lockouts

If the boiler trips drive or trips the electrical coverage equipment (like an RCD or breaker), that suggests an electrical fault, brief circuit, or moisture ingress. Those situations are the several from “average boiler breakdown” indicators like pressure drops, and they have to be taken care of cautiously.

Frequent lockouts with short periods would possibly suggest a sample equivalent to:

- flue element causing combustion products or blocked discharge
- temperature sensing faults
- fuel provide balance issues
- condensate drainage troubles in cold weather

Condensing boilers have faith in excellent condensate disposal. If the condensate pipe is blocked, frozen, or poorly mounted, the boiler can behave unpredictably. It might retain attempting to hearth and then stop for safety motives.

Symptom: mistakes codes that you simply retain resetting

Resetting a boiler can paintings briefly, however it’s also a catch. I’ve observed families preserve resetting weekly when you consider that the formula clears the fault briefly, then fails again. That mind-set turns a prognosis into guesswork. It additionally raises the opportunity of repeated lockouts going on formerly any trustworthy restore or inspection.

If you spot a repeating error, write down:

- the precise code
- how long it runs earlier locking out
- no matter if it’s heating, sizzling water, or both
- if you lately converted anything else, like turning radiators to a new application, adjusting heating instances, or making use of the equipment right through a notably cold spell

That knowledge helps an engineer come to a decision whether or not they’re looking at a sensor, a combustion quandary, a diverter valve, or whatever thing like a pump stream fault.

Symptom: smell of gas, soot marks, or yellow flames (deal with as urgent)

If you observe a gas scent, soot streaking across the boiler or flue joints, or signals of terrible combustion inclusive of continual yellow flames, don’t “reveal it for a day.” Treat it as an pressing security main issue.

A boiler is a gasoline equipment, and gas themes are usually not problems you troubleshoot with guesswork. The proper response is to isolate if recommended by using the emergency practise in your home, keep creating sparks, ventilate if trustworthy, and get in touch with a certified legitimate. A exact Gas security certificates method and Gas Fire Service exercises exist for a rationale, and safeguard checks usually are not a specific thing to lengthen.

Special case: gasoline cookers, fuel fires, and shared pipework symptoms

Sometimes the boiler breakdown symptoms you're experiencing aren't solely from the boiler. On multi-equipment installs, a force regulator substitute or a pipework restriction can display up as troubles in more than one location.



If you even have a Gas Cooker Installation or a Gas fire put in in the identical belongings, you may be aware that the cooker flame seems to be weak, the fuel fireplace struggles to ignite, or the sample of faults changes while home equipment are grew to become on.



That doesn't suggest the boiler is quality. It way the gasoline deliver and management show must always be checked as a technique. A professional Gas Safety Check can establish whether or not the fault is appliance-genuine or deliver-comparable.

And in advertisement settings, namely where catering machinery is in touch, it gets even more definite. I've worked on web sites the place a Burger van gas setup, or different top-call for LPG preparations, created tension behaviours that impacted other appliances whilst demands transformed fast. Commercial installs desire careful commissioning and reliable furnish management, and they're pretty much greater delicate to modifications in regulator performance and cylinder tiers.

When to call for boiler carrier as opposed to boiler repair

It's efficient to understand the big difference among boiler provider and boiler restore, because the symptom you describe need to event the service level.

Boiler service is recurring repairs, on a regular basis which includes tests of combustion, defense gadgets, and key components. Boiler repair is responding to a fault that already exists.

Still, the boundary blurs. If your boiler begins exhibiting signs and symptoms like intermittent scorching water, distinguished noises, or generic lockouts, it's no longer "simply provider time." It's a fix scenario that can contain areas substitute, flushing, or controls diagnosis.

A magnificent manner is to deal with persistent warning signs like a restoration, even should you had been due a service. If the fault is as a result of one thing like particles in a warm exchanger, a carrier gained't solve it. In the most well known cases, the engineer can form the fast drawback and also propose even if a Power Flush or corrective upkeep is outstanding.

Could it's a plumbing aspect rather than a boiler component?

This is where homeowners quite often get pissed off, since the boiler is the visual object and the plumbing runs are hidden. But many breakdown indications are as a result of the technique around the boiler.

Examples from the sphere:

- radiators that don't heat as a result of valve positions or blocked pipe runs
- air pockets presented with the aid of leaks
- pipework regulations that scale down go with the flow because of domestic hot water
- condensate worries concerning drainage routing, falls, or blockages

If you've had current Plumbing paintings, peculiarly nearby, it's really worth flagging. Even a in a position plumber can result in a trapped air pocket, a small leak, or a change in drive balance that later indicates up as "boiler failure."

Similarly, if there has been a boiler deploy upgrade just lately, it's price enthusiastic about whether or not the commissioning and settings were finished effectively to your method extent, radiator format, and scorching water usage trend. Boiler setting up troubles are infrequent, however once they manifest, the signs and symptoms are very actual.

Could it be an "installer settings" or regulate issue?

Modern boilers remember seriously on controls, sensors, and settings. Sometimes the boiler isn't damaged, it's misconfigured.

If your boiler merely misbehaves at unique instances of day, or in basic terms when you employ definite hot water patterns, a manipulate or scheduling predicament should be would becould very well be in touch. For example:

- heating times that clash with time crucial for the boiler to stabilize
- a thermostat or programmer main issue that factors call for swings
- sensor placement matters or erroneous sensor readings

One of the greater diffused scenarios is a mismatch between gadget design and the way it's used. A relatives that runs very low-demand warmth for lengthy intervals might ride unique biking behaviours than

person who probably heats for longer blocks. That's now not a "person errors" most as a reminder that boiler behaviour relies on demand styles.

Two brief checklists that save time whenever you call

When you touch a Gas Fire Service or Boiler Repair engineer, the fastest way to get the appropriate fix is to offer clean, consistent details. Here's a quick tick list that you would be able to use over the phone.

What to word approximately the boiler breakdown symptom

- Which mode fails: heating, scorching water, or both
- Any error code displayed, and what the boiler does prior to it locks out
- Whether the boiler force is low, increasing, or steady
- Any recent alterations, like Plumbing paintings, radiators bled, or new fuel cooker use
- Any noises, smells, or seen soot around flue areas

And if the engineer asks on your observations, this subsequent record facilitates you evade guessing.

Questions to reply before the engineer arrives

- How lengthy has the problem been occurring, hours, days, or weeks
- Does it work once in a while and fail at different times
- Are radiators all equally affected, or just definite rooms
- Have you had to major up strain recently
- Is it an LPG setup, and if this is the case, has the tank stage replaced recently

What you'll do thoroughly at the same time you wait (and what to preclude)

There are about a nontoxic activities that don't undermine diagnostics, yet there also are movements which could make issues worse.

If your boiler is low on rigidity, following the boiler brand's lessons for topping up (the use of the ideal filling loop approach) is perhaps proper. However, if the drive drops once again simply, repeated topping up can mask the actual leak. In that case, the proper flow is to manage boiler provider or boiler repair with rigidity loss in brain.

If your boiler is in lockout, one can note the code and the trend, after which wait for a right kind prognosis. Repeated handbook resets, with out inspection, are hardly worthwhile.

Avoid attempting to sparkling combustion or gas method yourself. Also circumvent trying DIY fixes that impact flue integrity, condensate pipe routing, or gas valves. Those are safe practices fundamental.

If you watched an issue on the topic of Gas safety certificate requirements, reminiscent of a boiler or gasoline equipment that hasn't been checked for a protracted period, it's not pricey to deal with the next talk over with as a compliance and restore possibility. A excellent certified pro will perform the appropriate assessments and advocate what documentation is needed for your own home model.

How warning signs hook up with distinctive faults, in plain language

Boiler breakdown symptoms can suppose like a cloud of unrelated complications. But they broadly speaking connect with a smaller set of factors.

- No warm or no scorching water can point to ignition, strength, gasoline give, or controls.
- Low rigidity factors to leaks, enlargement vessel trouble, or method stability.
- Uneven radiator warm typically points to circulate complications, air, or sludge.
- Short cycling steadily connects to circulate obstacles or sensor misreadings.
- Intermittent warm water can connect with diverting valves, heat exchangers, and pass sensing.
- Kettling and noises many times connect with scale construct-up or move limit.
- Frequent lockouts connect to safety triggers, combustion or flue behaviour, or sensor good judgment.

The noticeable aspect is that two boilers with the comparable symptom will have very distinct motives. That's why an amazing boiler provider engineer will ask questions, take a look at the development, determine the readings, and solely then endorse the restoration, whether it's boiler restoration, issue replacement, or a Power Flush.

The life like "next step" decision

If you're trying to settle on what to do perfect now, use a simple priority rule: safety first, then development attention.

If you odor fuel, see signs of negative combustion, or have blocked flue suspicion, deal with it as urgent. If your boiler is shutting down persistently with a clean mistakes code, take the trend seriously even supposing it "comes returned" after resets. If you've gotten low stress, recurring air, or leaks, don't preserve topping up continuously.

For everything else, it's on the whole appropriate to e-book a prognosis. A powerfuble legitimate will inform you whether you're watching at boiler provider maintenance, a restoration that shall be dealt with promptly, or a approach-level intervention like a Power Flush. And when you have relevant home equipment, like Gas Fire Installation, Gas Cooker Installation, or any LPG feed for catering device, mention it. In the actual international, the ones details usally shorten the task through hours.

Boiler breakdown indications might possibly be defined, yet they still require focus. The extra accurately you describe what you're seeing and the greater you restrict brief resets with no inspection, the rapid you get again to official hot water and heating, the manner the procedure was intended to work.