

A gas fireplace can turn into a room with no turning your existence into a plumbing task, yet purely if it's hooked up the desirable method. In Essex, I see the identical trend persistently: the client falls in love with the look of a ultra-modern inset fire, then the set up plan gets not on time when you consider that the wall, flue, or air flow requisites have been not checked early sufficient. The encompass appears to be like proper in a brochure, however the fireplace wants the suitable clearance, the best gasoline connection, and an appropriate air move to run thoroughly and accurately.

This is wherein first rate making plans beats guesswork. If you are contemplating **Gas Fire Installation Essex**, or you might be arranging **Gas Safety Check Essex** on the comparable time, the key selections in the main happen earlier than any brickwork is chased, sooner than any plaster is skinned again, and sooner than the surround is even ordered.

Along the approach, I'll also conceal the common knock-on matters that show up in precise life: poorly deliberate ventilation, restrictive surrounds, vintage wall openings that need exact training, and the "it labored first-rate until now" false impression when the appliance, the room, or the pipework has replaced.

The facet persons underestimate: ventilation

A fuel fire isn't always just a decorative flame. It's a combustion equipment. That manner it wants air to burn, and it wants the combustion merchandise in order to leave the room by means of the correct path, depending on the fireplace type.

When air flow is inaccurate, the warning signs may well be delicate initially. You may note sluggish lighting fixtures, a odor that's easy yet chronic, condensation round the surround, or a flame that appears "lazy". Sometimes the equipment nevertheless sparks and remains on, yet combustion performance drops and the room surroundings adjustments. On different instances, safeguard instruments keep operation fully, chiefly while there isn't ample air tension to operate as designed.

In Essex houses, I usually see ventilation concerns associated to fashionable refurbishments: new home windows, draught-proofing, sealed doorways, geared up carpets over antique grates, and insulating boards in strange places. Even if you happen to did no longer touch some thing close to the fireplace, the whole airtightness of the room can shift.

This is why any **Gas Fire Service Essex** or **Gas Safety Check Essex** needs to embody checking the ventilation route and the appliance functionality. If you're arranging **Gas Fire Installation Essex**, ask approximately air flow early, no longer as an afterthought at the element of installing the surround.

Room air topics extra than human beings think

Let's say the living room beforehand had a small gap under the entrance door and a fairly leaky window body. The fire might also were "fantastic" due to the fact that air could find its approach in. Now substitute that door with a tighter one, or re-seal the window, and the equal fireplace can struggle. Gas home equipment place confidence in steady situations.

Also, air flow necessities differ by equipment category and set up design. A decorative entrance may also appear to be it's doing nothing, however in a fireplace, the the front and encompass form the airflow course and the convective motion of heat air. That's now not as regards to aesthetics, it's about protected operation.

Choosing a surround that doesn't fight the fire

The surround is where model meets physics. A first rate encompass should always complement the fireplace with out narrowing vents, blocking off required clearances, or trapping warmth in which it could intent troubles.

The frequent component I see is that the encompass is selected for visual appeal first. The installer then discovers, infrequently late, that the encompass blocks an air inlet, covers a gap that needs to remain obtainable, or leaves insufficient space for the combustion air route and any associated flue equipment.

Surround design subjects in several tactics:

- It can preclude required clean air gaps at the perimeters and above the fire.
- It can quilt or partially impede ventilation grilles.
- It can create a "useless air" region that pushes heat into plaster or trees.
- It can affect how the fire attracts air, particularly with inset units.

Even if the encompass is "rated" or bought for the same fireplace, the factual take a look at is whether it fits the exact equipment requisites in that actual wall and room.

If you could have a wall that's been replastered, tiled, or backed with board, the encompass additionally determines how a lot of that education is noticeable. From a pragmatic factor of view, it can be lots less complicated to do correct prep and air flow tests previously the encompass is mounted completely.

Flue, termination, and what "appropriate" virtually means

When you hear the phrase "flue", it may possibly sound like a widespread component, yet gas hearth flues should not interchangeable. Some installations depend upon the present chimney or an effectively coated course. Others need dedicated pipe runs and good terminations. In Essex houses, the primary crisis tends to be what's already there.

Many older houses have a fire establishing that looks prepared for a new fire, but the aiding layout, liner condition, and suitability can vary widely. Sometimes the chimney is blocked or filled with debris. Sometimes it's far lined and sound, other instances it has deteriorated. Occasionally the outlet is too tremendous or too small for the chosen appliance, which then leads to cumbersome boxing in that can by chance intrude with ventilation.

If you are thinking about **Gas Cooker Installation Essex** along a hearth or you might be running different gas equipment paintings inside the equal part, it's still worthy treating the hearth deploy as its own defense-serious undertaking. Flues, ventilation, and strain circumstances are interconnected because of the room and the construction.

Inset, cassette, and balanced choices

Different fire types include varied realistic necessities. I am no longer going to pretend each decision is handiest about seems to be, considering the setting up info pressure what's possible to your extraordinary room.

Inset fires have a tendency to combine right into a recess, that is why encompass intensity and wall conclude subject. Cassette or fronted fires may also depend on a rigorously controlled clearance and will have distinctive ventilation demands at the rear. Decorative fireplaces that "sit down within" a gap still

require secure entry to the controls, trustworthy gas connection routing, and properly clearance around the warmth supply.

If you've got you have got a encompass already and also you favor to retailer it, you will. But you deserve to treat it like a constraint, now not a foregone end. A ready **Plumbing Essex** and gasoline installer will ask the suitable questions about the outlet dimensions, wall parts, and the ventilation direction prior to finalising the equipment choice.

For example, I've walked into a domicile in which the patron had offered a alluring surround with the hearth sitting centre-stage of their imagination. The installer took one seem to be and realised the recess could require extra air flow alterations and clearance differences. Rather than forcing the installation, the larger circulate became to event the encompass design to the appliance plan, now not any other way around.

The "prior to you buy" measurements that retailer money

You don't desire knowledgeable drawings to avert natural blunders. You do desire just a few respectable measurements and a willingness to pass-cost the surround and appliance necessities with the installer previously ordering anything else.

At minimum, I'd desire accurate dimensions of the fire establishing, inclusive of the intensity to the lower back of the recess, the obtainable width, and the peak. If there is an latest flue establishing, you also want to bear in mind what's in the back of the wall face, not simply the visual hole. A intensity size concerns as it influences wherein the to come back plate sits and how the flue or liner route could be controlled.



Also imagine get entry to. You want ample house so that maintenance, servicing, and any long run **Gas Fire Service Essex** paintings is functional. Tight installations that look neat can change into painful later.

If you are in the middle of a maintenance, coordinate the fireplace set up with the plastering and ground plan. People basically end the redecorating first, then detect the appliance requires variations to wall finishes or air flow grilles that might had been a whole lot less difficult to handle previously.

Ventilation treatments that don't destroy the look

Ventilation is just not at all times a war between safeguard and aesthetics. Sometimes the right solution makes use of hidden grilles or incorporated openings that tournament the surround. Other instances, the premiere preference is a dedicated ventilation ingredient put the place it remains discreet.

Here are a couple of practical ventilation processes I see in UK installs, defined in regular terms. The proper selection is dependent at the equipment and the room circumstances, so it's advice that will help you ask more suitable questions, no longer a DIY recipe.

Common ventilation methods (and what to invite)

1. **Background ventilation because of everlasting openings** - Ask even if the room wishes a particular ventilation path and whether that can also be provided due to an opening in the hearth region or by way of a predefined path.
2. **Ventilation presented simply by the fire entrance and encompass design** - If the encompass makes use of a design that allows combustion air to achieve the appliance with no being blocked, that can remedy the limitation elegantly.
3. **Adjustments after airtightness changes** - If the room has had new home windows or superior draught-proofing, ask for a ventilation overview as opposed to assuming the previous situations still observe.
4. **Checking for obstructions in current chimneys** - If you plan to make use of an present chimney, make sure that the course is excellent and transparent, simply because blocked or restrictive routes can disillusioned the appliance.
5. **Ensuring any required air paths remain accessible** - Even if a ventilation issue is "invisible", it have got to no longer be sealed over for the period of decoration or boxed in permanently with no excellent provision.

That final aspect is imperative. I've visible "transitority" decorator boardings was everlasting sealed surfaces, after which the fireplace received't behave the manner it will have to.

When the wall will not be what it appears to be like like

A fireside beginning can conceal all forms of surprises. Some surrounds sit over damaged brickwork. Some recesses are uneven. Some walls are "cast" until you chase to come back the plaster and discover a cavity [Boiler Breakdown Essex](#) or an strange board layer. If there may be trees near the appliance, the required clearances changed into even greater considerable.

If you are combining fireplace setting up with other fuel work, which includes **Boiler Repair Essex** after a heating element or planning a **Boiler Service Essex** sooner than wintry weather, do no longer imagine the identical wall and pipe route will behave the comparable manner. Gas home equipment deserve to every have their very own risk-free setting up planning and pipe runs.

The safest installs are not the ones that look quickest, they are those that tackle the constitution and the ventilation path as a technique.

Carbon monoxide and the "small checks" that matter

One of the most important misunderstandings I listen is that if a fireplace lighting nicely, it will have to be burning cleanly. Combustion can nevertheless be suboptimal even if the flames seem commonplace. That's why a **Gas Safety Check Essex** is not really just office work, it's the sensible step that confirms nontoxic operation.

During a real payment, the installer should always investigate flue overall performance where suitable, examine for protected gas tightness, and make certain that the equipment is working within expected

parameters. This is additionally in which you may ask approximately nontoxic operation daily, like what to do for those who notice ordinary smells, persistent condensation around the encompass, or alterations in flame trend.

If you might be sharing the home with different gas appliances, a safe practices fee is even extra vital. A poorly acting appliance in one vicinity can substitute how the entire room behaves.

And whenever you are in a local that uses LPG, the considerations can become extra precise. Some residences have LPG provide, and that impacts how accessories and servicing are approached. If LPG applies to your private home, it's well worth discussing this basically with the engineer underneath the LPG setup, no matter if you want **LPG Essex** make stronger for provide context or you're planning broader gasoline work.

Practical examples from Essex homes

I'll share a couple of general scenarios I've seen in Essex, in view that those are the moments in which the "encompass and ventilation" communication turns from concept into true choices.

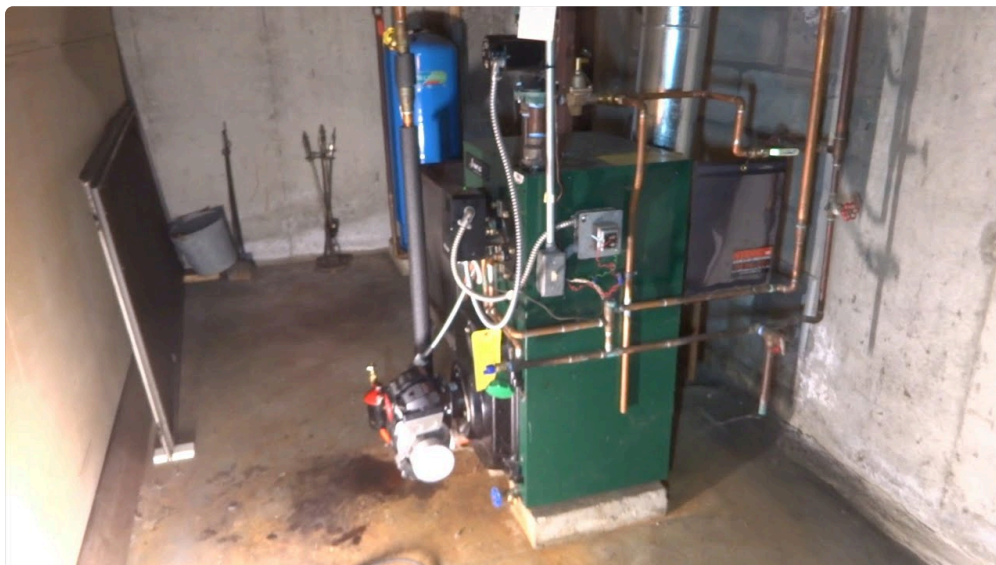
Example 1: The encompass that looked desirable, then blocked airflow

A home-owner had purchased a up to date surround that was once slimmer than the original fireside boxing. The fire itself used to be the true flavor, however when the engineer verify-equipped it, the surround design could have protected a air flow route required with the aid of the appliance. There become additionally a issue about warmness construct-up at the back of the ornamental facade.

The resolution wasn't dramatic, it used to be measured. The surround used to be adjusted to go away the obligatory clearances and to shop the air flow direction open. In the give up, the performed look became nonetheless awesome, but the targeted visitor was once relieved they'd not on time ordering till the installing plan turned into demonstrated.

Example 2: The airtight maintenance that changed how the fire behaved

Another residence had new home windows equipped the iciness previously the hearth improve. It wasn't a good sized refurbishment, just better sealing and a tighter draft profile. When the hearth changed into set up, it lit and stayed on, but the property owner pronounced occasional odours and a visible swap in draughtiness around the room.



That became a sign to check air flow. The fix was no longer basically “turn it up” or “leave it alone”. The ventilation attitude used to be revisited so the room had steady air intake conditions for combustion. Once addressed, the hearth ran extra constantly and the peculiar indications lowered.

These are precisely the kinds of details that an excellent **Gas Fire Installation Essex** carrier will discover early, due to the fact the engineer plans round the proper room, not the showroom variant of it.

Fitting a brand new gasoline hearth seriously is not necessarily a one-day job

People on occasion assume a gas fire installing to be a day activity. Sometimes it truly is, yet making plans concerns. If a flue route should be all set, if an outdated starting necessities cleaning and proper lining, if pipework should be rerouted cleanly, or if the encompass requires model, the process can run longer.

When it’s achieved true, the installer needs to also leave the domain tidy and make certain controls and get entry to elements are usable. If you’re balancing this alongside other work within the abode, it is helping to booklet with a timeline that consists of possible discovery. Essex properties range massively, in particular between older terrace houses and greater modern builds.

Also, for those who are coping with a separate heating situation first, it’s wide-spread to pair making plans. For instance, after a **Boiler Breakdown Essex** call, you could guide a **Boiler Service Essex** and then schedule the hearth setting up as soon as the heating manner is strong. That reduces the chance of you altering two variables at the related time.

Safety and compliance: what you need to expect

Even without getting in authorized jargon, a proper install may want to apply safe practices, top trying out, and best suited certification processes. In the UK, that most likely potential documenting the install adequately and guaranteeing the appliance and its connections are risk-free.

If you want to be positive, ask the engineer what checking out and exams would be finished and what documentation it is easy to obtain, inclusive of wherein a **Gas security certificates Essex** is needed or equipped as portion of the carrier approach.

This also is the place official knowledge supports: knowing which encompass transformations are ideal, which air flow small print have to stay unchanged, and which flue routes are ideal.

Where other functions healthy in (and the place they don’t)

You may also see associated service alternate options when searching in the community. For example, if your house has higher moisture subject matters or air flow complexity, some individuals also ask approximately **Aircon Essex** or **Air Conditioning Essex**. Those procedures can swap airflow and luxury, yet they may still no longer be handled as substitutes for proper fuel fire ventilation making plans.

Similarly, you could see broader plumbing give a boost to such as **Plumbing Essex** all the way through upkeep. That will probably be precious, but a fuel fire install wishes a ready gasoline engineer for deploy and commissioning obligations, considering that you might be facing dependable combustion and gas connections.

And should you are working as a enterprise, fuel installations take on further real looking that means. I’ve heard of factors like **Burger van fuel Essex** sourcing and setup. That’s a special use case, but it reinforces

the related level: trustworthy fuel install depends on suitable equipment, best trying out, and splendid ventilation for the atmosphere wherein the equipment operates.

A functional means to devise the task within the top order

If you would like the encompass to land accurate and the ventilation to be right kind, the sequencing concerns.

Here's the mindset I advise depending on what percentage installs move flawed whilst individuals get in advance of themselves:

- Start by means of deciding upon the hearth structured on room conditions and flue or flue-adjacent constraints, not just the catalogue look.
- Confirm air flow standards with the installer sooner than the encompass is fastened.
- Use a surround which can meet clearance and get right of entry to expectancies.
- Schedule commissioning and checks all of the sudden after setting up, sooner than the room is entirely embellished.

If you are replacing an existing fireplace, you furthermore may would like to allow time for making awesome and cleansing up the surround space, so the finished end result appears to be like intentional, no longer patched.

Two matters that characteristically extend installs

Delays are hardly ever about "bad luck". They broadly speaking hint to come back to a couple of predictable subject matters.

First, ready too lengthy to determine the encompass and ventilation design. By the time the surround arrives, the installation plan is already written around a collection of assumptions. When the assumptions are wrong, the restore most likely includes extra labour than if it were checked previously.

Second, underestimating the kingdom of existing flues or recesses. A chimney that looks clean can nonetheless have liner disorders, blockages, or structural worries. Once that's came across, the installer may also want time to alter the install plan.



If you would like to diminish the two delays, ask for an early website online investigate and produce your encompass plans to the discussion earlier than ordering.

The commissioning phase: what “completed effectively” feels like

After the equipment is hooked up, a actual commissioning and verification task makes the distinction between a hearth that behaves properly and one that reasons periodic complications. You will have to be expecting secure operation tests, confirming the gasoline connections are safeguard, and verifying the combustion operation is solid.

A well engineer may even talk you by using what to do in case you become aware of signs and symptoms later. For example, if the fireplace takes pretty longer to pale, if the flame sample differences, or should you see new condensation round the surround, that is simply not the instant to disregard it. It’s the moment to booklet **Gas Fire Service Essex** and a clean payment.

That’s additionally where preventative preservation helps. Fires gain from consistent exams, surprisingly in properties the place occupants open windows commonly, where radiators are changed, or wherein new extraction followers are put in.

Keeping the formula healthful year-round

Once your gas fireplace set up is most excellent, the day-to-day care is largely not unusual sense. Keep vents transparent, do now not block grilles with decorations, and preclude sealing off any ventilation course “since it looks draughty”.

In prepare, I’ve located that home owners need reassurance more than principles. They wish to understand what’s widely wide-spread and what seriously is not. A first rate installer offers you that relief, and it in many instances starts off with explaining what ventilation seems like when it’s running true.

If you also are handling the relax of your heating setup, it enables to retain your **Boiler Service Essex** agenda aligned. Heating structures work together through how the property’s air behaves, tremendously in winter while the entirety runs more quite often.

Quick choice tick list for homeowners

If you only take one element from all this, take the questions that secure you from the so much steeply-priced error. These are the ones I imply asking sooner than every person fixes the surround completely.

- Will the chosen encompass permit the specified ventilation and clearances for this suitable equipment and wall setup?
- Does the setting up place confidence in an current flue, and has it been checked for suitability?
- What assessments and tests might be implemented at commissioning, and what documentation will I accept?
- If the room is airtight by means of renovations or new home windows, how will air flow be addressed?
- If anything seems tight round the recess or pipe course, what ameliorations will the installer recommend ahead of becoming the decorative front?

Final feelings on riskless, tidy, good-looking installs

A fuel hearth install should still believe reassuring from delivery to finish. You should grow to be with a encompass that looks constructed on your room and a hearth that lighting cleanly and runs predictably, without weird and wonderful smells or condensation surprises.

In Essex, where estate styles vary from older terrace fireplaces to fashionable, sealed extensions, the triumphing strategy is regular: plan ventilation and clearances early, fit the surround to the equipment requisites, and determine commissioning and defense documentation are handled correctly.

Whether you're going through a heating precedence like **Boiler Repair Essex**, arranging ongoing care resembling **Boiler Service Essex**, or going immediately right into a complete **Gas Fire Installation Essex** mission, the comparable idea holds. Great consequences come from careful prep, not rushed installing.

If you'd like, tell me what type of fireplace you're considering that (inset, cassette, or a replacement of an present style), whether or not you may have an existing flue, and what your surround fashion looks like. I allow you to pinpoint the questions that be counted maximum in your definite setup.