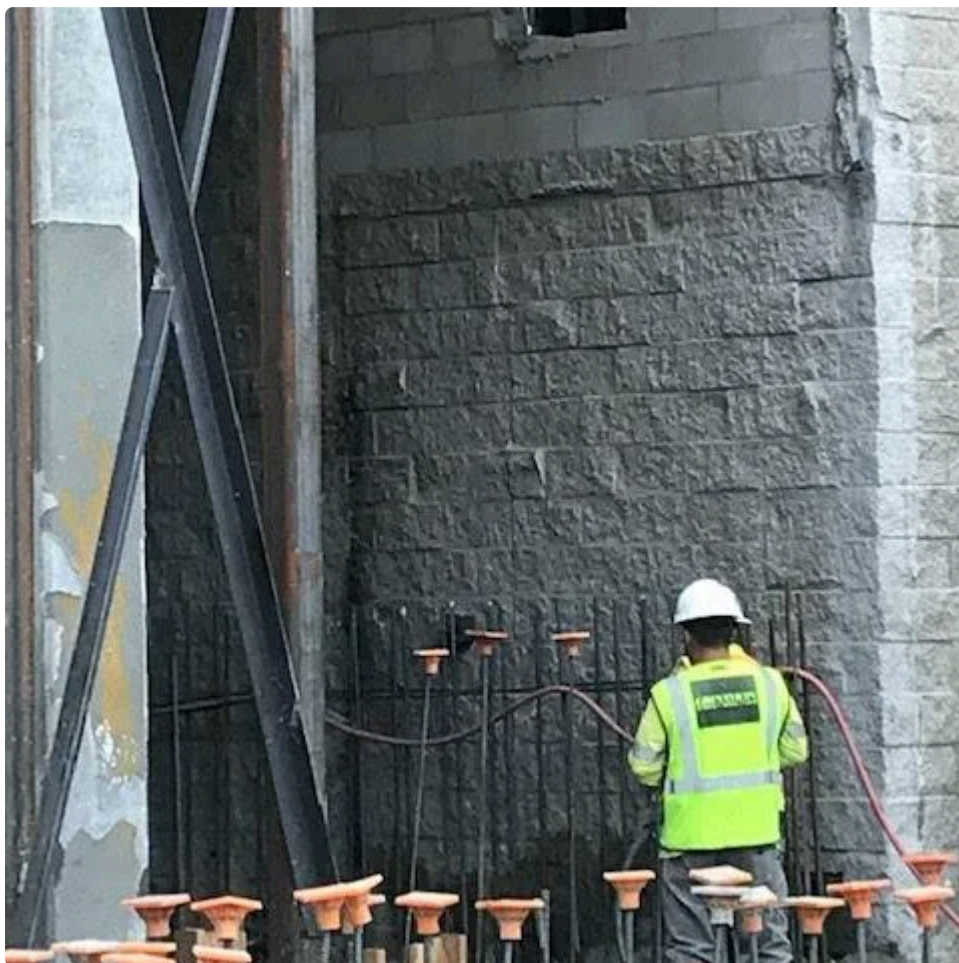


## Hospitality Lighting Design Mystic: Lighting the Guest Journey

Lighting is the silent concierge of hospitality. In Mystic, Connecticut—a destination known for maritime charm and modern leisure—thoughtful illumination is transforming how guests perceive, navigate, and remember their stays. Hospitality lighting design Mystic is no longer just about brightness; it's about crafting a layered, intuitive, and emotionally resonant guest journey. From entry to exit, every beam and shadow can influence mood, brand perception, and operational efficiency. For hoteliers focusing on hotel interior design Mystic CT, lighting is a strategic lever that connects aesthetic ambitions to measurable outcomes.

The arrival sequence sets the tone. Guests form impressions in seconds, so exterior and lobby lighting must balance visibility, drama, and warmth. [restaurant contractors near me greython.com](https://www.greython.com) Consider facade uplights that articulate architectural features, combined with glare-controlled path lighting for safety and comfort. Inside, a layered approach—ambient, accent, and task—reduces visual fatigue while directing attention. Pendant clusters above reception can serve as sculptural markers, while wall washers flatten shadows for flattering photos. As modern hotel design trends Connecticut continue to evolve, tunable white systems are becoming more prevalent, enabling lobbies to shift from energizing noon tones to warmer evening scenes without changing fixtures.



Brand storytelling thrives on contrast and control. Boutique hotel renovation Mystic projects often leverage lighting to reinforce narrative elements: a coastal palette enhanced by cool, crisp LEDs in public spaces, or bespoke sconces echoing nautical forms. These choices pair well with curated hotel furniture and fixtures Mystic properties select to express personality. The interplay of materials—brushed brass, natural oak, textured plaster—comes alive under the right color rendering index (CRI 90+), revealing authentic tones and elevating perceived quality. For luxury hotel interiors Mystic Connecticut, high-CRI, glare-free sources communicate refinement before a single word is spoken.

Wayfinding is another dimension where lighting truly earns its keep. Intuitive illumination can guide guests without the visual clutter of excessive signage. Softly lit portals, stair riser LEDs, and corridor cove lights help guests orient themselves instinctively. In guest room remodeling Mystic, designers are shifting away from a single central fixture to decentralized layers: perimeter coves for ambience, bedside reading lights with precise beam control, and localized task lights at desks or vanities. Motion-sensing night lights under beds or vanities improve safety while minimizing sleep disruption—an important detail in guest comfort renovation trends.

The bathroom is often a make-or-break moment. Hotel bathroom upgrades Mystic CT benefit from vertical, face-friendly lighting at mirrors, not just overhead downlights that cast unflattering shadows. Tunable systems can adapt to morning routines (cooler, higher output) and evening wind-down (warmer, softer). Proper IP ratings, anti-fog mirrors with integrated LEDs, and dimmable controls build both luxury and durability. When integrated thoughtfully, lighting also supports sustainability goals through occupancy **Construction company** sensors and efficient drivers, aligning with modern hotel design trends Connecticut that prioritize environmental stewardship.

Restaurants and bars within hotels require a different dramaturgy. Layered pools of light on tabletops create intimacy, while discreet spotlights accent artwork and back-bar displays. Dimming protocols—ideally from 0–10V or DALI—should be granular, allowing operators to adjust by zone and time of day. Glare management is essential; baffle trims, lensing, and carefully selected beam angles prevent discomfort and maintain a calm atmosphere. For boutique hotel renovation Mystic projects aiming for a distinct F&B identity, pairing artisanal luminaires with hidden architectural lighting helps keep the guest experience both authentic and photogenic.

In conference and event spaces, flexibility rules. A lattice of track or busway systems allows quick reconfiguration without extensive rewiring. Scene presets help staff pivot from a keynote address to a banquet in seconds. Integrating controls with AV systems streamlines operations and reduces errors. For design-build contractors Mystic hotels rely on, early coordination with structural and mechanical teams ensures ceiling integrations, coves, and soffits are feasible, maintainable, and compliant with codes.

Controls are the brain of the system. Occupancy and vacancy sensors, daylight harvesting, and circadian-friendly scheduling are now baseline expectations in higher-tier properties. In guestrooms, a simple, intuitive interface reduces calls to the front desk. Large, clearly labeled buttons or touch panels with scene names—Welcome, Work, Relax, Sleep—empower guests while subtly guiding behavior. For guest room remodeling Mystic efforts, integrating bedside control for all lighting, drapery, and privacy indicators enhances perceived luxury and operational efficiency. Integration with PMS can trigger welcome scenes on check-in and energy-saving modes on check-out.

Maintenance and longevity matter. Selecting luminaires with accessible drivers, standardized lamping where appropriate, and robust finishes saves money over the life of the building. In hotel furniture and fixtures Mystic specifications, consider integrated lighting in headboards, wardrobes, and minibars with replaceable LED modules. Ensure adequate ventilation for fixtures in enclosed coves to prevent thermal failure. For design-build contractors Mystic hotels partner with, mockups are invaluable: they validate beam spreads, mounting heights, and dimming performance before full rollout.

Safety and compliance should be designed in, not added on. Emergency egress lighting, illuminated exit signage, and path markings must be code-compliant without disrupting ambience. Low-level guide lighting can reconcile safety with style. In luxury hotel interiors Mystic Connecticut, custom housings and finishes can align code-required elements with the brand palette.

Sustainability is both an ethical and financial imperative. High-efficacy LED solutions, networked controls, and an emphasis on reuse during boutique hotel renovation Mystic reduce energy and waste. Consider TM-30 for more nuanced color quality evaluation than CRI alone, and specify fixtures with Environmental Product Declarations

where possible. Selecting dim-to-warm or tunable white sources with long L70 lifespans ensures consistent experience and fewer replacements, aligning with the most progressive modern hotel design trends Connecticut.

Finally, think experience before equipment. Hospitality lighting design Mystic is about orchestrating feelings—arrival assurance, mid-stay delight, bedtime calm, and a lasting farewell. When lighting supports human rhythms, highlights material beauty, and respects operations, it becomes a competitive advantage rather than a line item.

Actionable steps:

- Audit existing conditions with light-level measurements and guest feedback.
- Build a layered lighting concept per zone—arrival, lobby, corridors, guestrooms, bathrooms, F&B, event spaces.
- Prototype a full-scale guestroom for guest room remodeling Mystic validation, including controls and hotel bathroom upgrades Mystic CT details.
- Align specifications for hotel furniture and fixtures Mystic with integrated lighting and accessible maintenance.
- Engage design-build contractors Mystic hotels trust early to align budgets, schedules, and code requirements.
- Commission thoroughly: aim for seamless dimming, correct scenes, and documented maintenance plans.

Questions and Answers

Q1: How can I improve guestroom lighting without a [commercial restaurant contractors](#) full renovation? A1: Focus on controls and layers. Add bedside reading lights with precise beams, under-bed night lights with motion sensors, and dimmable lamps. Swap to high-CRI, warm-dim bulbs. These low-impact moves **restaurant construction builders** support guest comfort renovation trends while avoiding major construction.

Q2: What's the ideal approach to hotel bathroom lighting? A2: Use vertical, glare-free lighting at mirrors, supplement with dimmable ambient light, and include a low-level night mode. Specify high-CRI, moisture-rated fixtures. This aligns with hotel bathroom upgrades Mystic CT standards and elevates the guest's routine.

Q3: Are tunable white systems worth it in lobbies? A3: Yes, if operated well. They adapt the mood across dayparts and support modern hotel design trends Connecticut. Ensure staff-friendly presets and training to avoid inconsistent scenes.

Q4: How do I keep maintenance manageable? A4: Choose fixtures with accessible drivers, standardized components, and robust warranties. Coordinate with design-build contractors Mystic hotels use to plan access panels and ventilation, and document replacement procedures.

Q5: How does lighting support boutique branding? A5: Combine distinctive decorative fixtures with hidden architectural layers. Use high-CRI sources to reveal finishes and hotel furniture and fixtures Mystic selections. Lighting becomes a brand signature that photographs beautifully and feels authentic on arrival.

