

**Business Name:** BeeHive Homes of Taylorsville

**Address:** 164 Industrial Dr, Taylorsville, KY 40071

**Phone:** (502) 416-0110

## BeeHive Homes of Taylorsville

BeeHive Homes of Taylorsville, nestled in the picturesque Kentucky farmlands southeast of Louisville, is a warm and welcoming assisted living community where seniors thrive. We offer personalized care tailored to each resident's needs, assisting with daily activities like bathing, dressing, medication management, and meal preparation. Our compassionate caregivers are available 24/7, ensuring a safe, comfortable, and home-like setting. At BeeHive, we foster a sense of community while honoring independence and dignity, with engaging activities and individual attention that make every day feel like home.

[View on Google Maps](#)

164 Industrial Dr, Taylorsville, KY 40071

### Business Hours

- Monday thru Sunday: Open 24 hours

### Follow Us:

- Facebook: <https://www.facebook.com/BHTaylorsville>
- Instagram: <https://www.instagram.com/beehivehomesoftaylorsville/>

### Explore this content with AI:

 [ChatGPT](#)  [Perplexity](#)  [Claude](#)  [Google AI Mode](#)  [Grok](#)

Families generally begin taking a look at assisted living or broader senior care options since something has actually changed. A fall. Missed out on medications. Increasing confusion. Or a spouse quietly confessing, "I can't do this alone any longer."

That is when the brochures start piling up, and many of them look the same: big structures, hotel-style lobbies, restaurant-style dining. On paper, it can be hard to comprehend why some families rather pick a small senior care home that looks almost like a routine home on a quiet street.

The difference typically becomes clear the minute you walk through the door.

## The feel of a front door, not a lobby

When I tour families through small assisted living homes, the first thing they comment on is not the care plan or the activity calendar. They see the smell of soup simmering on the range. The family photos on the mantle. The tv quietly playing in the background instead of blasting in a common space. It seems like someone's home since it is.

In a small residential senior care home, you normally see 6 to 16 homeowners, not 80 or 120. Caretakers work in the kitchen, assist with laundry, and sit at the same table. The rhythm of the day feels closer to family life than to a program.

That environment matters more than most households realize. Older grownups who have actually already given up driving, maybe lost friends or a partner, and are managing health modifications are being asked [elderly care](#) to adapt yet once again. A homelike environment softens that shift. Residents can relax into a place that behaves like a home instead of a facility.

I have enjoyed individuals who hardly left their spaces in big assisted living communities come to life in a smaller setting: sitting at the kitchen island peeling apples, talking with caretakers, or signing up with a next-door neighbor on the patio. Same person, same diagnosis, different environment.

## Why size straight affects quality of care

The size of a senior care setting is not simply cosmetic. It changes what is possible.

In a small assisted living home, care staff usually understand every resident's routines by heart: how they like their coffee, which shirt they choose on Sundays, whether they tend to roam at 3 a.m. That depth of familiarity is tough to develop when staff are accountable for a long corridor of apartments.

To understand the compromises, it helps to look at a few essential distinctions between larger communities and smaller homes.

### 1. Staffing patterns and continuity

In huge buildings, staffing typically works by zones or corridors. A caretaker might be responsible for 12 to 20 locals on a shift, sometimes more. Turnover can be high, which means homeowners continuously fulfill new faces. In a small home with 6 to 10 citizens, a caretaker's project may cover the entire home. Ratios differ, but it is common to see one caregiver for 3 to 5 homeowners during the day in better small homes, and lower at night. This indicates more time per individual and quicker action to needs.

### 2. Supervision and safety

Households typically worry about security, specifically with memory problems. In a big assisted living setting, a resident can stroll a far away from their room to typical locations, and staff might not observe immediately if something is incorrect. In a smaller home, typical locations and bed rooms are better together. Caregivers can see and hear more just by existing in the home. This does not change correct fall-prevention or safe and secure exits when dementia is involved, however it provides a built-in layer of natural oversight.

### 3. Flexibility of routines

Large communities often count on schedules for efficiency: set meal times, shower days, group activities at fixed hours. Some residents delight in the structure, however others find it rigid. In a small senior care home, it is easier to flex around the person. If someone prefers a late breakfast or a peaceful bath in the afternoon, there is less bureaucracy to navigate. Personnel can state, "Sure, let's do that," instead of, "We will see if we can fit you onto the schedule."

### 4. Staff relationships and accountability

In small settings, everyone sees whatever. If a resident has a bad cravings for 2 days, the caretaker, the nurse, and often the owner or administrator will notice and discuss it. There is less room for somebody to "slip through the cracks." I have viewed small homes identify urinary system infections, medication side effects, and mood modifications previously merely due to the fact that staff routinely see the very same few people in close quarters.

None of this suggests a big assisted living community automatically supplies poor senior care. Some are outstanding, with strong staffing and thoughtful programs. Size just sets the phase. It shapes how care is delivered and how quickly staff can preserve genuine, individualized attention.

## **Emotional security: being understood, not just cared for**

The scientific side of elderly care is only half the photo. Emotional safety matters just as much, specifically for individuals facing loss of independence.

In a small home, homeowners usually find out each other's names within days. They see the same employee day after day. They observe when somebody is missing out on from breakfast and inquire about them. There is a type of regular intimacy: the caregiver who knows precisely when to bring the cardigan, or the fellow resident who keeps in mind somebody's favorite dessert.

I keep in mind one lady, Margaret, who moved into a small home after two tough months in a much bigger assisted living facility. In the larger setting, she spent most of her time in her room. She told her child, "I feel like I remain in a hotel where I do not know anybody." In the small home, the supervisor greeted her at the door, assisted her hang family photos, and sat with her at the table that initially evening. Within a week, she and another resident were viewing old musicals together every afternoon.

Nothing about her care plan changed in a technical sense. Very same medications, same diagnosis, same walker. The distinction was basic: she felt known.

When older grownups feel understood, 3 things tend to follow. First, they take part more. They are more likely to come to the table, join discussions, or go for a walk in the lawn. Second, they communicate signs previously due to the fact that they feel somebody is truly listening. Third, behavior concerns connected to anxiety or confusion often ease, particularly in dementia, since the environment feels predictable and supportive.

Large structures can absolutely produce pockets of this type of belonging. Some do it well. Small homes, by their very nature, start closer to that goal.

## **How smaller homes handle changing care needs**

Families often worry that a small senior care home will not be able to handle increasing requirements, specifically for dementia, movement issues, or intricate medical conditions. This is a reasonable concern, and it does not have a single answer, since guidelines and designs vary by region.

Many residential assisted living homes are licensed to supply assist with all the usual activities of daily living: bathing, dressing, toileting, transferring, and medication administration or management. Some likewise focus on memory care, with qualified personnel and protected environments for those with Alzheimer's or other dementias. A subset works closely with visiting hospice companies to support locals at the end of life, which permits many individuals to avoid another disruptive move.

Where small homes can struggle is with extremely technical medical requirements: ventilators, regular IV medications, or complex wound care that requires a nurse on-site for long blocks of time. In those cases, a competent nursing facility or particular medical setting might be more secure and more appropriate.

The useful concern for families is not "Can a small home handle everything?" however "Can this particular home handle what my loved one requires now, and reasonably manage what we expect over the next year or two?" Well-run homes will be honest about their limits. If a company assures they can handle any level of care no matter what, without ever requiring to move someone, that is an alerting indication more than a reassurance.

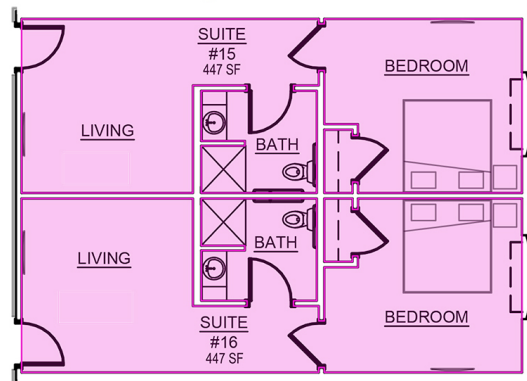
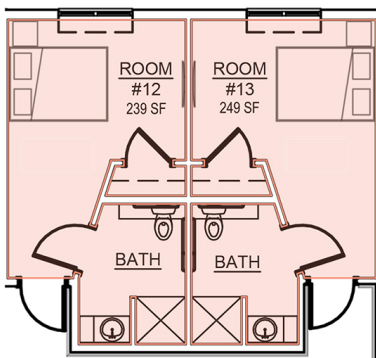
It is likewise important to ask how the home collaborates with outside doctor. Excellent homes maintain close interaction with medical care physicians, home health, therapy service providers, and hospice teams. They are used to scheduling mobile lab draws, organizing transport to consultations, and keeping track of for changes that might indicate infection, medication concerns, or pain.

## The distinct function of respite care in small homes

Respite care can be a lifeline for family caretakers who are reaching their limitation. It refers to short-term stays, typically from a few days approximately a few weeks, where the older adult relocations into an assisted living or senior care setting temporarily. This provides the main caretaker a chance to rest, travel, or attend to other responsibilities.



## Floorplans



Small residential care homes are typically perfect places for respite care, especially for somebody who has never ever resided in any type of senior neighborhood before. Moving temporarily into a huge assisted living building with long hallways and dozens of unknown faces can be frustrating. A smaller home feels closer to what the individual currently knows.

There is also a useful advantage. Staff in a small home can generally adjust a respite guest faster, because there are less homeowners to find out and less routines to juggle. I have actually seen households use a couple of week respite stay in a small home as a sort of "test drive." The older adult gets a feel for shared living, the

household sees how staff connect with them, and both sides can decide whether a longer-term arrangement feels right.

For caregivers in the house, respite in a small setting also offers peace of mind. They know their loved one is not lost in the shuffle and that any issue is more likely to be noticed promptly.

## **Trade-offs: when larger assisted living neighborhoods make sense**

Smaller is not automatically much better for every single individual or every scenario. Large assisted living communities use some benefits that are worth calling clearly.

They typically have more formal programming: numerous daily activities, on-site gyms, chapels, hair salons, and transportation for group getaways. Extroverted homeowners, or those still rather independent, may grow because environment. Somebody who enjoys large-group bingo, organized exercise classes, and a dining room busy with discussion might find a big community more stimulating.

Big structures also in some cases have on-site medical centers, therapy fitness centers, or drug store services. For particular complicated conditions, or when regular rehab is needed, this can be practical. Prices can often be more foreseeable also, with standardized plans and business policies.

Financially, there is no universal rule. Some small homes are more budget friendly than big communities, particularly in markets where real estate expenses are lower and overhead is modest. Others are quite pricey, particularly if they maintain extremely low staff-to-resident ratios. Families require to compare not just the base rate however also the care charges, medication charges, and add-ons.

Lastly, some older adults simply choose the sensation of a bigger, busier place. They like having numerous dining rooms, official events, or the sense of living in a "community" rather than a single home. Character and choice matter as much as diagnosis.

## **What "homelike" really suggests in practice**

The word "homelike" shows up in almost every senior care pamphlet. In a smaller residential home, it ought to be more than marketing language. It needs to show up in the small, daily details.

Meals, for instance, are normally prepared in the kitchen area where citizens can see and smell what is happening. Breakfast might not be a set plated meal but a discussion: "Do you feel like oatmeal or eggs this morning?" Residents may assist set the table or fold napkins. Even if somebody does not actively get involved, just watching the natural flow of a household can be grounding.

Bedrooms seem like real spaces, not hotel units. There is typically more versatility about bringing furniture from home, hanging art, or rearranging things. When someone wakes confused at night, they are just a couple of actions from a caregiver's bed room or personnel office.

Noise levels are different too. Rather than overhead paging systems or large televisions in every typical area, you hear the sounds of a typical home: water running, a radio in the kitchen, two locals talking near the window. For people with dementia or sensory level of sensitivity, this calmer environment can reduce agitation and overwhelm.

Families likewise tend to incorporate differently. In a small home, there is generally no need to arrange visits around sophisticated sign-in systems or navigate a huge car park. Member of the family stroll in, welcome personnel by first name, and often wind up sharing a cup of coffee at the table. Holidays can feel like extended family gatherings, with adult children, grandchildren, and staff all weaving together.

# Questions to ask when exploring a small senior care home

Choosing a senior care setting is not about discovering excellence. It is about matching a real individual, with specific needs and preferences, to a genuine location with specific strengths and limits. To make that match, households require useful, pointed questions.



Here is an easy checklist to bring when you tour a small assisted living or residential care home:

1. What is the common staff-to-resident ratio during days, nights, and nights, and how skilled are the caregivers?
2. Exactly which care jobs are included in the base rate, and what costs extra if my loved one's requirements increase?
3. How do you deal with medical problems after hours, and who chooses when to send out somebody to the hospital?
4. How do you incorporate brand-new homeowners mentally, especially if they are shy, anxious, or coping with dementia?
5. What type of respite care stays do you provide, and how much notice do you need to accept a short-term guest?

Listen not simply to the answers, however to how personnel respond. Do they speak in specifics or in generalities? Are they comfy acknowledging limits? Do you see caretakers communicating with residents in genuine time, and if so, does it feel warm and authentic or rushed and task-focused?

Trust your observations as much as the glossy products. Notice smells, sounds, body language, and simple things like whether call lights, if present, are neglected or answered quickly.

## When staying home is no longer working

A peaceful truth in elderly care is that most people want to remain at home, however not everyone can do so safely. Families typically wait till a crisis to consider assisted living, by which time options narrow. Checking out choices early, specifically smaller homes, can reduce that pressure.

For some older grownups, the shift to a small senior care home can feel less like "going into a center" and more like relocating to a different family home where aid is simply built in. That mindset shift matters. It honors the person as more than a set of care tasks and acknowledges their need for belonging, familiarity, and dignity.

Respite care is a gentle way to start that expedition. A week in a small home, framed as a short stay while the family caretaker rests or takes a trip, offers everyone genuine details about how the older adult reacts to shared living. Often, the individual surprises the family by saying they feel much safer or less lonesome. In some cases, it confirms that home with extra assistance remains the better choice for now.

Either way, the choice is made with experience, not simply speculation.

## **The heart of the matter: home as a feeling, not an address**

Assisted living, senior care, and respite care are technical terms, but under them sits a basic human concern: "Where will I still seem like myself?" For lots of older adults, especially those who discover big, institutional environments frightening, the answer depends on smaller residential homes.

These homes can not replace the history and intimacy of somebody's initial house. They can, nevertheless, provide something simply as crucial in this phase of life: a place where routines feel familiar, personnel feel like extended family, and the scale of daily life matches what an older mind and body can comfortably navigate.

When families step into a small assisted living home and say, frequently with some surprise, "This actually feels like a home," they are pointing to the genuine value of these environments. Not chandeliers or grand lobbies, however a pot on the range, a well-worn reclining chair, a caregiver leaning in to hear a story they have most likely heard 3 times before and still treat as new.

That sensation is tough to quantify on a comparison chart. Yet for the older grownup who has actually given up a lot already, it can make all the difference in between simply receiving care and genuinely living someplace that seems like home.

BeeHive Homes of Taylorsville provides assisted living care

BeeHive Homes of Taylorsville provides memory care services

BeeHive Homes of Taylorsville provides respite care services

BeeHive Homes of Taylorsville supports assistance with bathing and grooming

BeeHive Homes of Taylorsville offers private bedrooms with private bathrooms

BeeHive Homes of Taylorsville provides medication monitoring and documentation

BeeHive Homes of Taylorsville serves dietitian-approved meals

BeeHive Homes of Taylorsville provides housekeeping services

BeeHive Homes of Taylorsville provides laundry services

BeeHive Homes of Taylorsville offers community dining and social engagement activities

BeeHive Homes of Taylorsville features life enrichment activities

BeeHive Homes of Taylorsville supports personal care assistance during meals and daily routines

BeeHive Homes of Taylorsville promotes frequent physical and mental exercise opportunities

BeeHive Homes of Taylorsville provides a home-like residential environment

BeeHive Homes of Taylorsville creates customized care plans as residents' needs change

BeeHive Homes of Taylorsville assesses individual resident care needs

BeeHive Homes of Taylorsville accepts private pay and long-term care insurance

BeeHive Homes of Taylorsville assists qualified veterans with Aid and Attendance benefits

BeeHive Homes of Taylorsville encourages meaningful resident-to-staff relationships

BeeHive Homes of Taylorsville delivers compassionate, attentive senior care focused on dignity and comfort

BeeHive Homes of Taylorsville has a phone number of (502) 416-0110

BeeHive Homes of Taylorsville has an address of 164 Industrial Dr, Taylorsville, KY 40071

BeeHive Homes of Taylorsville has a website <https://beehivehomes.com/locations/taylorsville>

BeeHive Homes of Taylorsville has Google Maps listing <https://maps.app.goo.gl/cVPc5intnXgrmjJU8>

BeeHive Homes of Taylorsville has Facebook page <https://www.facebook.com/BHTaylorsville>

BeeHive Homes of Taylorsville has an Instagram page <https://www.instagram.com/beehivehomesoftaylorsville/>

BeeHive Homes of Taylorsville won Top Assisted Living Homes 2025

BeeHive Homes of Taylorsville earned Best Customer Service Award 2024

BeeHive Homes of Taylorsville placed 1st for Senior Living Communities 2025

## **People Also Ask about BeeHive Homes of Taylorsville**

### **What is BeeHive Homes of Taylorsville Living monthly room rate?**

---

The rate depends on the bedroom size selection. The studio bedroom monthly rate starts at \$4,350. The one bedroom apartment monthly rate is \$5,200. If you or your loved one have a significant other you would like to share your space with, there is an additional \$2,000 per month. There is a one time community fee of \$1,500 that covers all the expenses to renovate a studio or suite when someone leaves our home. This fee is non-refundable once the resident moves in, and there are no additional costs or fees. We also offer short-term respite care at a cost of \$150 per day

### **Can residents stay in BeeHive Homes until the end of their life?**

---

Usually yes. There are exceptions, such as when there are safety issues with the resident, or they need 24 hour skilled nursing services

### **Do we have a nurse on staff?**

---

No, but we do have physician's who can come to the home and act as one's primary care doctor. They are then available by phone 24/7 should an urgent medical need arise

### **What are BeeHive Homes' visiting hours?**

---

Visiting hours are adjusted to accommodate the families and the resident's needs... just not too early or too late

## Do we have couple's rooms available?

---

Yes, each home has rooms designed to accommodate couples. Please ask about the availability of these rooms

## Where is BeeHive Homes of Taylorsville located?

---

BeeHive Homes of Taylorsville is conveniently located at 164 Industrial Dr, Taylorsville, KY 40071. You can easily find directions on [Google Maps](#) or call at [\(502\) 416-0110](tel:5024160110) Monday through Sunday Open 24 hours

## How can I contact BeeHive Homes of Taylorsville?

---

You can contact BeeHive Homes of Taylorsville by phone at: [\(502\) 416-0110](tel:5024160110), visit their website at <https://beehivehomes.com/locations/taylorsville>, or connect on social media via [Facebook](#) or [Instagram](#)

[Rick's White Light Cajun Diner](#) offers classic diner-style meals that can be enjoyed by residents receiving assisted living or memory care during senior care and respite care outings.